



DUROPROOF™ M17

PENETRATING SEALER FOR ASBESTOS CEMENT ROOF

DUROPROOF™ M17 is a solvent based polymeric sealer specifically designed to penetrate, bind and saturate the surface of weathered asbestos cement roof sheeting. Once cured the surface becomes a stable adhesive substrate for the application of Duro Mastic™ AC or Duro Mastic™ SR, long life acrylic membrane coating.

The pink colouring generally indicates priming has been undertaken, thereby facilitating Q.A..

PRINCIPLE CHARACTERISTICS

- ♦ Single component
- ♦ Simple application
- ♦ Excellent penetration and adhesion
- ♦ Seamless—no joints
- ♦ No need to remove asbestos roof
- ♦ Does not support fungus growth

USE AREA

- ♦ Weathered asbestos cement roof sheets
- ♦ Fibrous cement sheeting

SURFACE PREPARATION

Clean the surface of all debris, moss and other loose materials taking care not to disturb the asbestos surface. Apply diluted Duro Prep Anti Fungal Concentrate and allow to dry.

Apply 2-3 coats of Duroproof™ M17 allowing 6-8 hours between coats. Ensure the surface is fully saturated. Allow 48 hours before top coating with Duro Mastic™ AC or SR. Take adequate precautions to prevent overspray damage.

CLEANING

Xylene whilst wet. Commercial paint strippers once dry.

PACKAGING

- ♦ 20 Litre

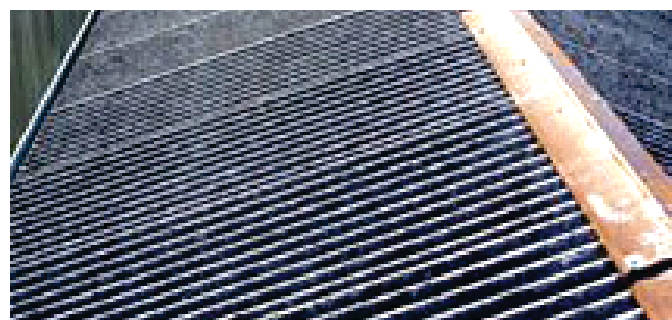
PRECAUTIONS

Do not apply below 10°C or above 30°C. Avoid contact with skin and eyes. Provide adequate ventilation. Isolate sources of ignition during storage and application.

Refer to Durotech MSDS prior to use.

GENERAL

Colour	Clear
Weather Resistance	Excellent, when top coated with Duro Mastic™ AC or SR
Service Life	8-10 years when top coated with Duro Mastic™ AC or SR
Dry time	Approx 2 hours @ 25° C
Recoat	Approx 6 hours @ 25° C
Top coat	3 days @ 25° C
Coverage	1-3 Litres /m ² depending on substrate porosity
Solids content	43% by volume
Shelf Life	12 months in unopened containers stored at 20° C



14 Essex Street, P.O Box 5092, Minto, NSW 2566

+61 2 9603 1177

+61 2 9475 5059

sales@durotechindustries.com.au

www.durotechindustries.com.au

The information provided in this data sheet is correct at the time of printing (albeit is subject to change at any time) and is intended to give a simple description of the product and its capabilities. In practice, the substrate, intended surface to be treated and environmental conditions vary widely, making it essential for the user to determine the products suitability for a particular application and to ensure that the product is not used beyond its physical limitations. If in doubt contact the manufacturer. The product will perform as described herein provided it is applied in accordance with the manufacturer's instructions as stated in this data sheet and provided that the building and installation is structurally sound and the application is carried out competently. Durotech terms and conditions of sale apply.